

Bringing Innovations to Urban Renewal International Conference

Hong Kong 10 June 2016

Innovations in the conservation of concrete, stone and steel: the restoration of Frank Lloyd Wright's Fallingwater

Pamela Jerome, AIA, LEED™ AP, FAPT, F.US/ICOMOS

President, Architectural Preservation Studio, PC

Adjunct Assoc. Professor, Columbia University GSAPP

New York, NY





Photo Credit: WASA, Courtesy of Western Pennsylvania Conservancy

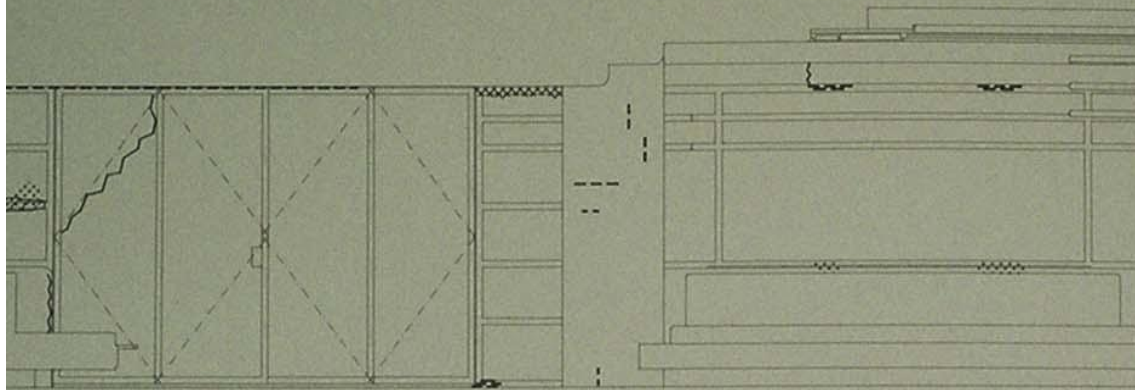


Photo Credit: Paul Wiegman, Courtesy of Western Pennsylvania Conservancy

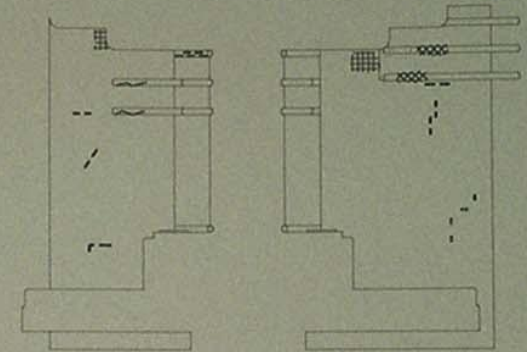


Photo Credit: WASA, Courtesy of Western Pennsylvania Conservancy

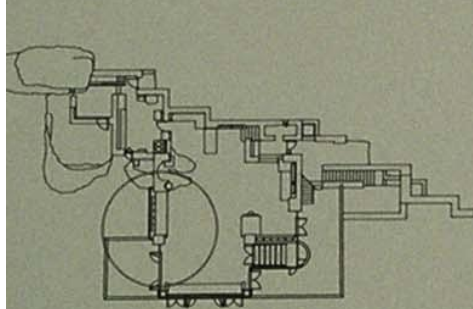




LIVINGROOM WEST INT. ELEV.



SITTING NOOK SOUTH INT. ELEV. SITTING NOOK NORTH INT. ELEV.



Plan
1ST_FLOOR_PLAN



LIVING_ROOM

History of Conditions

Observed Deficiencies Cracking paint, corrosion & water marks in Sitting Nook related to leak from above. Water infiltration and staining sap from plant on glass at corner. Some corrosion and open joints above door to W Terrace related to deflection.

Date of Inspection

10/01/98.--(DP.)

LIVINGWATER -- Condition Assessment
SA Architects

5_OF_7_PG#45

Photo Credit: WASA, Courtesy of Western Pennsylvania Conservancy



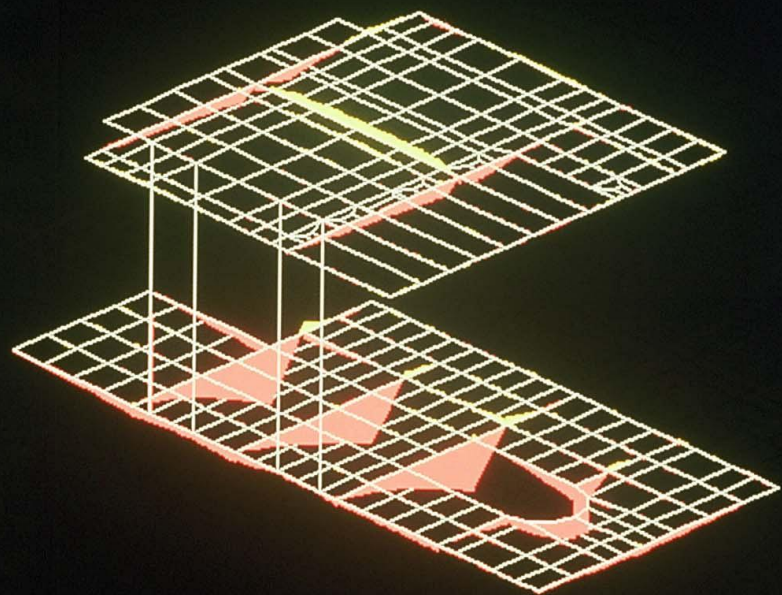


Photo Credit: The Frank Lloyd Wright Foundation/APS, Courtesy of Western Pennsylvania Conservancy





Photo Credit: WASA, Courtesy of Western Pennsylvania Conservancy



Y
Z
X

5035EX3C
FRAME
OUTPUT M33
LOAD 1

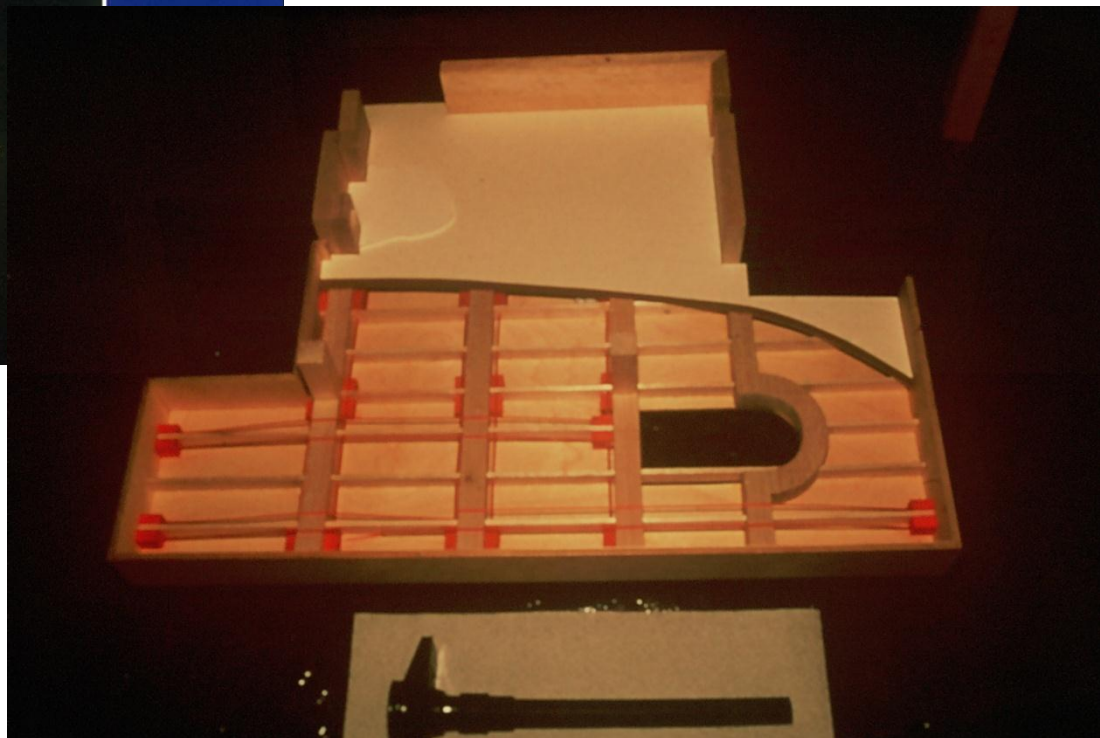


Photo Credit: RSA, Courtesy of Western Pennsylvania Conservancy



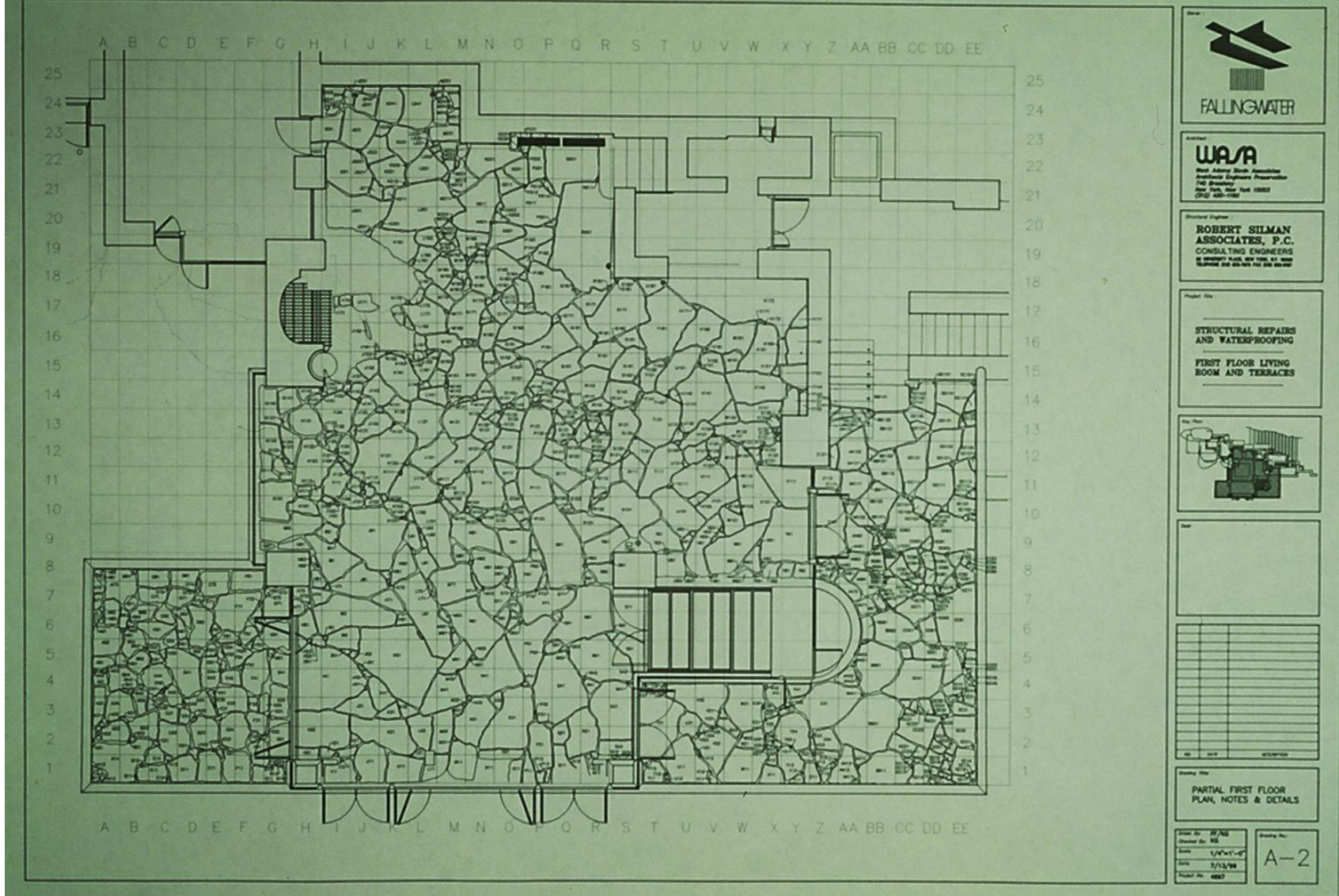


Photo Credit: WASA, Courtesy of Western Pennsylvania Conservancy





Photo Credit: Scott Perkins, Courtesy of Western Pennsylvania Conservancy





Photo Credit: WASA, Courtesy of Western Pennsylvania Conservancy



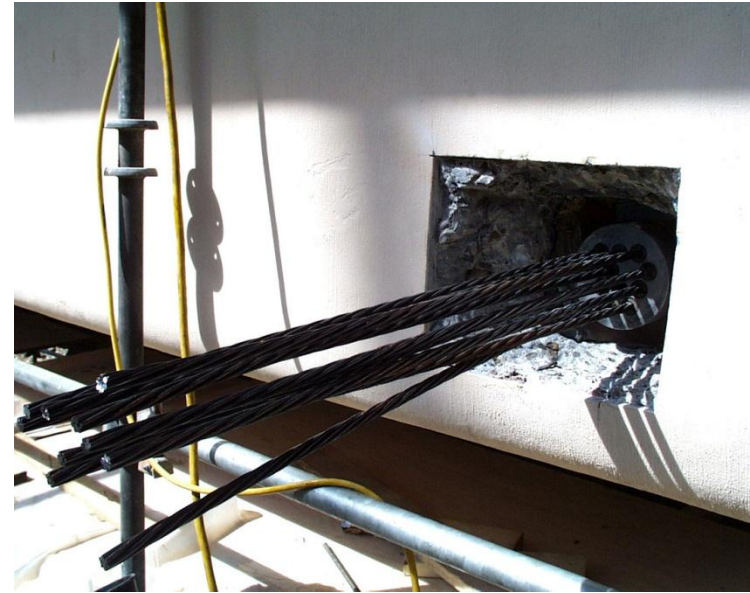


Photo Credit: WASA/RSA, Courtesy of Western Pennsylvania Conservancy





Photo Credit: APS, Courtesy of Western Pennsylvania Conservancy



Photo Credit: WASA, Courtesy of Western Pennsylvania Conservancy



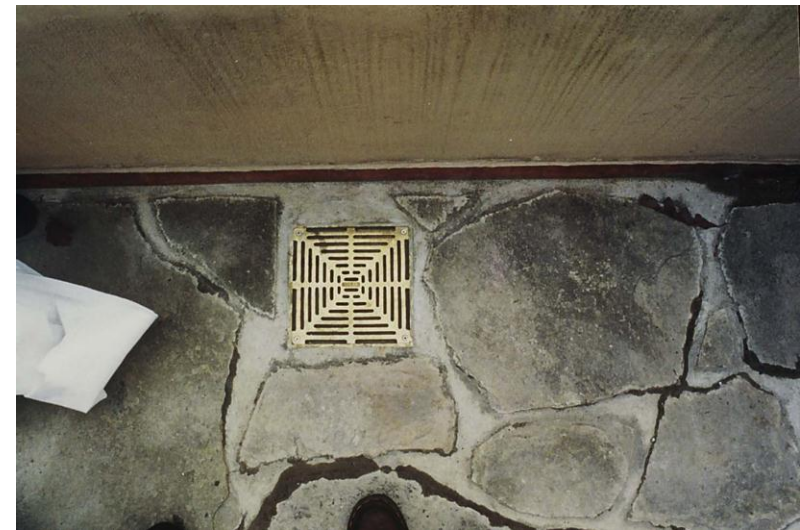
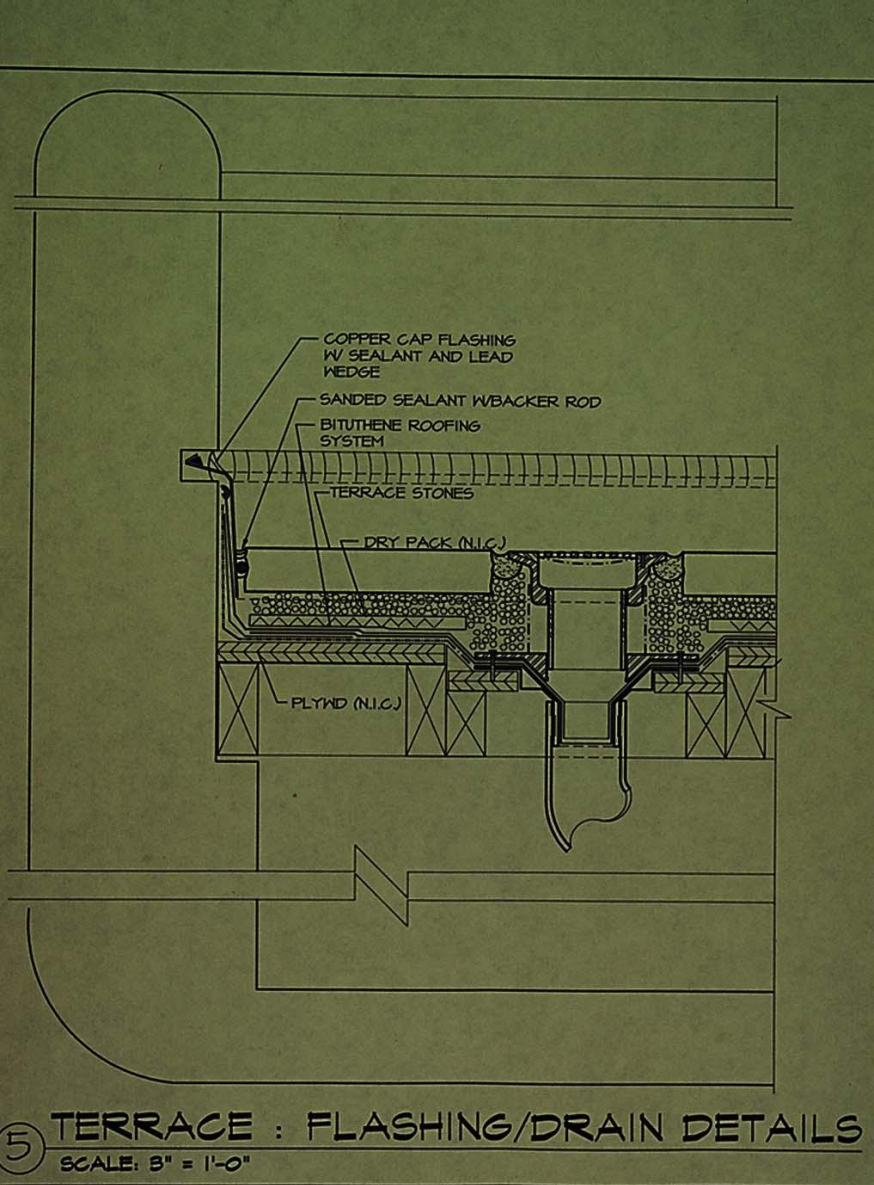


Photo Credit: WASA, Courtesy of Western Pennsylvania Conservancy





Photo Credit: APS, Courtesy of Western Pennsylvania Conservancy



Photo Credit: WASA, Courtesy of Western Pennsylvania Conservancy



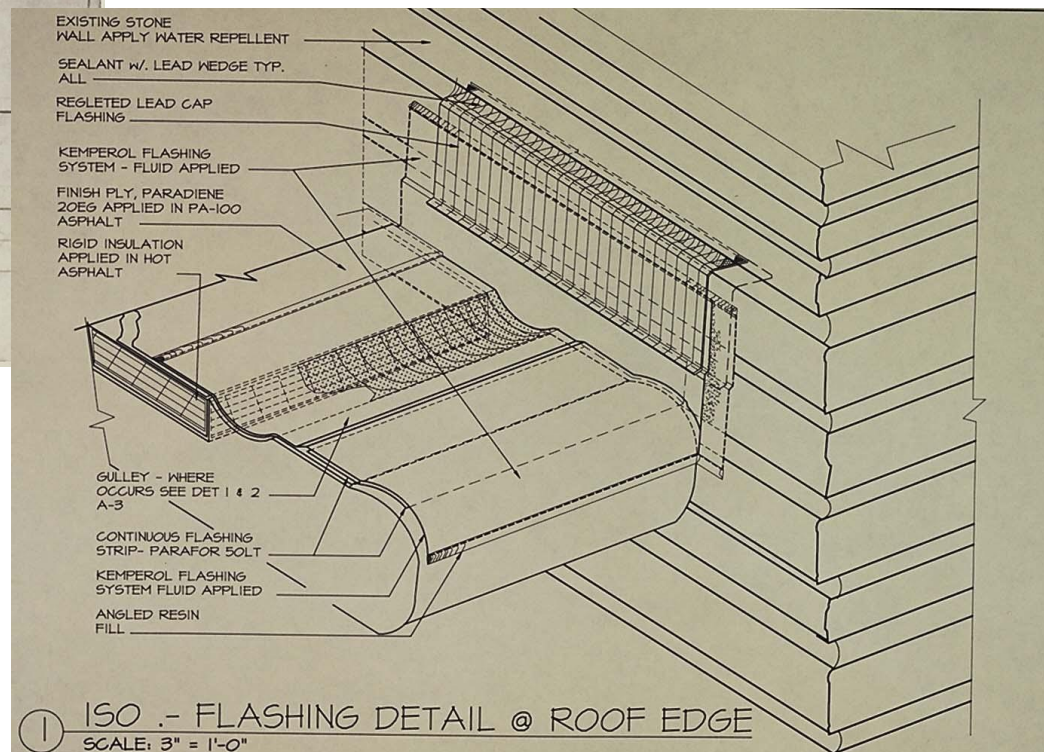
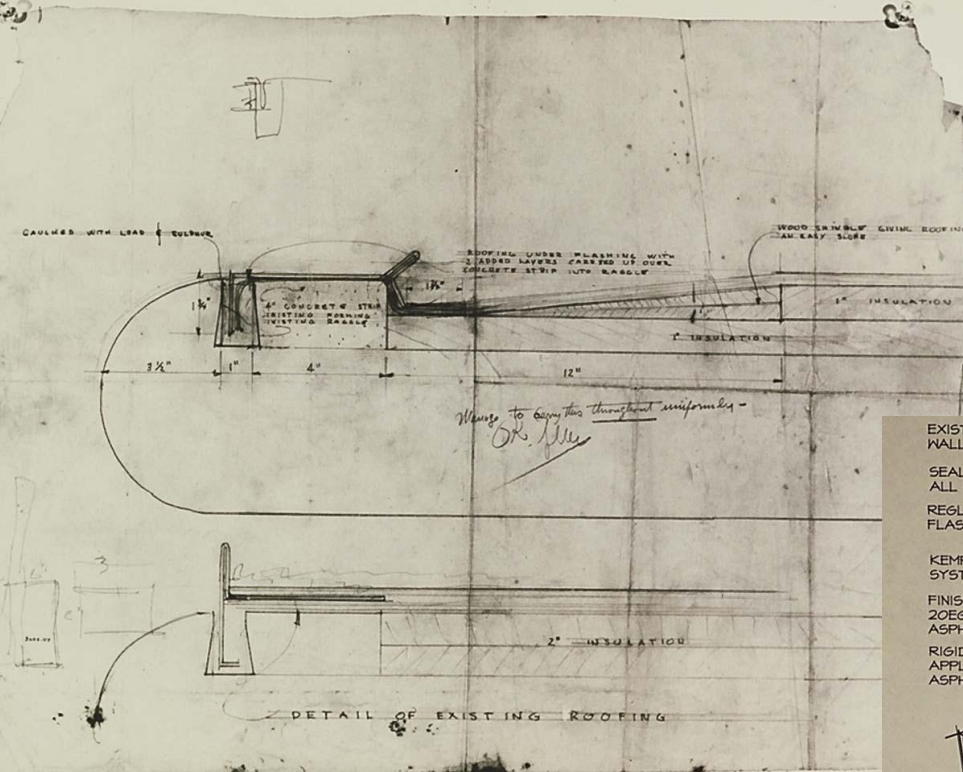


Photo Credit: Frank Lloyd Wright Foundation/WASA, Courtesy of Western Pennsylvania Conservancy





Photo Credit: WASA, Courtesy of Western Pennsylvania Conservancy





Photo Credit: APS, Courtesy of Western Pennsylvania Conservancy



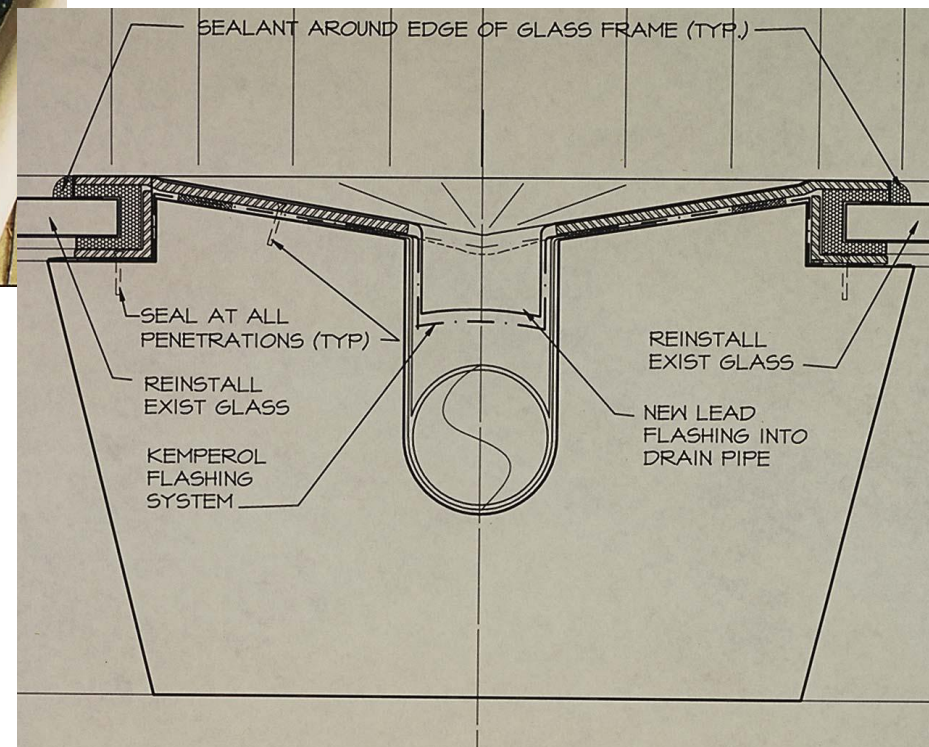


Photo Credit: WASA, Courtesy of Western Pennsylvania Conservancy



1818 **HOPE'S** 1938
The Name *Guarantees*



Residence of E. J. Kaufmann, Bear Run, Pa. *Frank Lloyd Wright, Architect*

THE MANUFACTURE OF THIS COMBINATION OF STEEL CASEMENT WINDOWS, AND OF THE MANY OTHERS WHICH FORM SUCH ATTRACTIVE DETAILS IN THIS RESIDENCE, CALLED FOR SPECIAL CONSTRUCTION IN OUR SHOPS • THE LONG EXPERIENCE OF OUR ENGINEERING DEPARTMENT IN DEALING WITH SIMILAR PROBLEMS IS ALWAYS AT YOUR SERVICE.

HOPE'S WINDOWS INC., Jamestown, N. Y.

JANUARY • 1938 21



Photo Credit: Avery Architectural & Fine Arts Library/WASA, Courtesy of Western Pennsylvania Conservancy





Photo Credit: WASA, Courtesy of Western Pennsylvania Conservancy





Photo Credit: WASA, Courtesy of Western Pennsylvania Conservancy

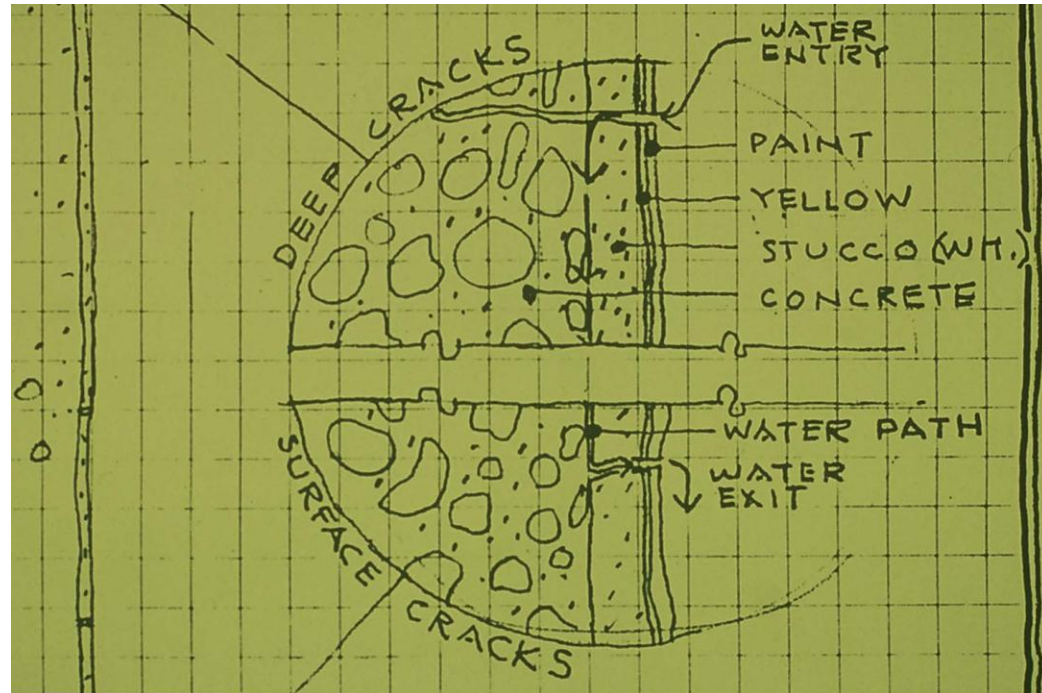
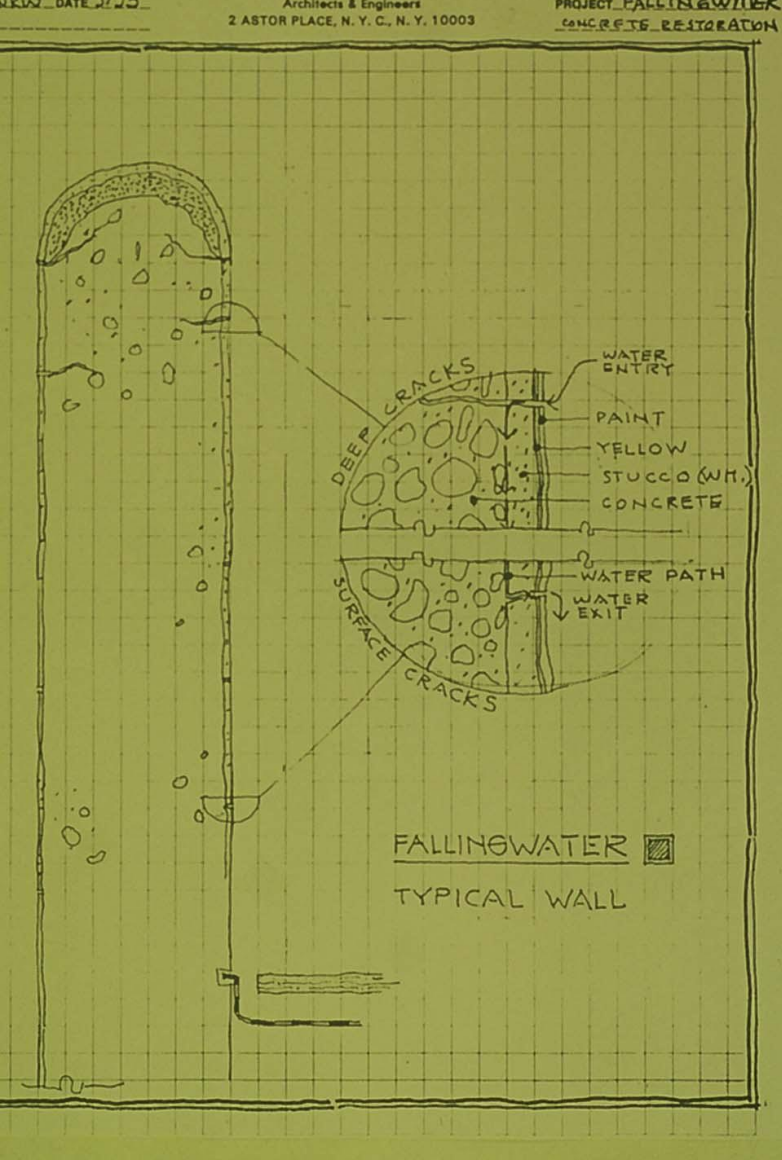


Photo Credit: WASA, Courtesy of Western Pennsylvania Conservancy





Photo Credit: WASA, Courtesy of Western Pennsylvania Conservancy





Photo Credit: WASA, Courtesy of Western Pennsylvania Conservancy





Photo Credit: APS, Courtesy of Western Pennsylvania Conservancy





Photo Credit: APS, Courtesy of Western Pennsylvania Conservancy





Photo Credit: WASA, Courtesy of Western Pennsylvania Conservancy



Photo Credit: WASA, Courtesy of Western Pennsylvania Conservancy





Photo Credit: WASA, Courtesy of Western Pennsylvania Conservancy





Photo Credit: APS, Courtesy of Western Pennsylvania Conservancy





Photo Credit: APS, Courtesy of Western Pennsylvania Conservancy



Photo Credit: WASA, Courtesy of Western Pennsylvania Conservancy





Photo Credit: ICR/WASA, Courtesy of Western Pennsylvania Conservancy





Photo Credit: WASA, Courtesy of Western Pennsylvania Conservancy